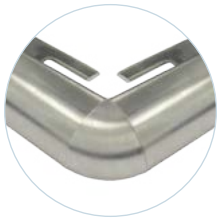
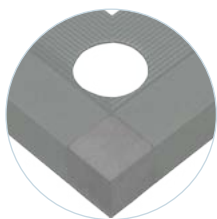


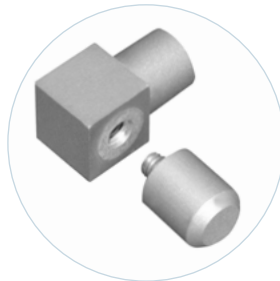
COLORI / COLORS



Modo di installazione capsula tonda



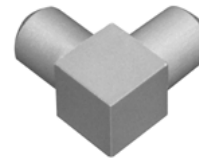
Modo di installazione capsula quadra



Possibilita' di montaggio come tappo svitando la parte cilindrica







CAPSULA TONDA



CAPSULA QUADRA

SCHEDA ORDINE PRODOTTO / PRODUCT ORDER DATA SHEET

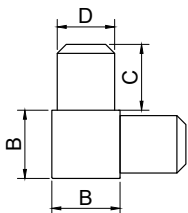
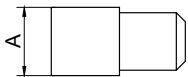
COD.	MOD.				
CAPAL08-01	Tonda alluminio 8mm	Lucida	10	100	0,003 kg/pz
CAPAL08-02	Tonda alluminio 8mm	Satinata	10	100	0,003 kg/pz
CAPAL10-01	Tonda alluminio 10mm	Lucida	10	100	0,004 kg/pz
CAPAL10-02	Tonda alluminio 10mm	Satinata	10	100	0,004 kg/pz
CAPAL12-01	Tonda alluminio 12,5mm	Lucida	10	100	0,012 kg/pz
CAPAL12-02	Tonda alluminio 12,5mm	Satinata	10	100	0,012 kg/pz
CAPAL08-01A	Quadra alluminio 8mm	Lucida	10	100	0,006 kg/pz
CAPAL08-02A	Quadra alluminio 8mm	Satinata	10	100	0,006 kg/pz
CAPAL10-01A	Quadra alluminio 10mm	Lucida	10	100	0,009 kg/pz
CAPAL10-02A	Quadra alluminio 10mm	Satinata	10	100	0,009 kg/pz
CAPAL12-01A	Quadra alluminio 12,5mm	Lucida	10	100	0,013 kg/pz
CAPAL12-02A	Quadra alluminio 12,5mm	Satinata	10	100	0,013 kg/pz

SCHEDA TECNICA PRODOTTO / TECHNICAL SHEET

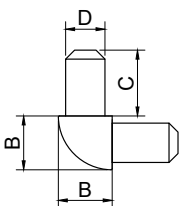
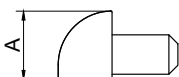
MOD.	A*	B*	C*	D*
Tonda alluminio 8mm	8	9,4	11	5,3
Tonda alluminio 10mm	11,4	9	11	6,6
Tonda alluminio 12,5mm	13,4	11	11	8,6
Quadra alluminio 8mm	9,4	9,4	10,4	7,8
Quadra alluminio 10mm	11,4	11,4	11	9,6
Quadra alluminio 12,5mm	13,4	13,4	11	11,6

*MEASURES IN MILLIMETERS

CAPSULA QUADRA



CAPSULA TONDA



CAPSULE IN ALLUMINIO

Le capsule in alluminio permettono la realizzazione di raccordi a 2 o 3 assi di profili in alluminio.

Materiale: Alluminio.

ALUMINIUM CAPSULE

The aluminum capsules allow the connection of 2 or 3 aluminum profiles.

Material: Aluminium.