
 Prodotto da GRUPPO STAMPLAST questo articolo è indicato per la stesura di malte cementizie. Disponibile in diverse misure. Materiale: Polistirolo.

 POINTING TROWEL PLASTIC Manufactured by GRUPPO STAMPLAST this article is suitable for applying cement mortar. Available in different sizes. Material: Polystyrene.





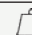
 TALOCHE PLASTIQUE POINTUE

 PALETA EN PLASTICO PUNTA



COLORI / COLORS


SCHEDA ORDINE PRODOTTO / PRODUCT ORDER DATA SHEET

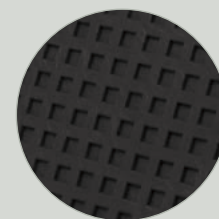
COD.	MOD.*					
FR18X27-03PUNT	Frattoni a punta 18x27	●	12	960	100x120x215	0,205 kg/pz
FR14X27-01PUNT	Frattoni a punta 14x27	●	12	1536	100x120x220	0,190 kg/pz

*MEASURES IN CENTIMETERS

SCHEDA TECNICA PRODOTTO / TECHNICAL SHEET

MOD.	A*	B*	C*	D*	E*
Frattoni a punta 18x27	188	55	270	180	10
Frattoni a punta 14x27	192	55	270	140	10

*MEASURES IN MILLIMETERS



Piano levigatore

